



STUDENT ADMISSION SMS

**GOVERNMENT COLLEGE JAITHARI,
DISTRICT- ANUPPUR (M.P.) INDIA**

POLICY

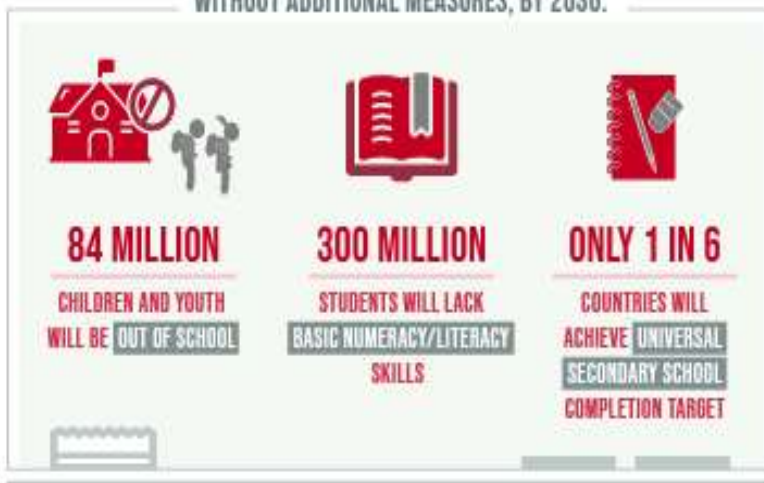


ENSURE INCLUSIVE AND EQUITABLE QUALITY EDUCATION AND PROMOTE LIFELONG LEARNING OPPORTUNITIES FOR ALL

DESPITE SLOW PROGRESS,

THE WORLD IS FALLING FAR BEHIND IN ACHIEVING QUALITY EDUCATION

WITHOUT ADDITIONAL MEASURES, BY 2030:

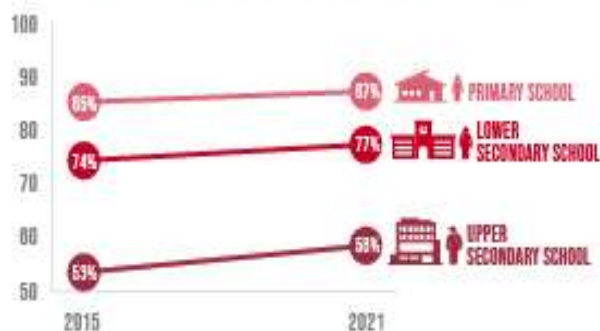


THE PANDEMIC

CAUSED LEARNING LOSSES IN **4 IN 5** OF 104 COUNTRIES STUDIED

PRIMARY AND SECONDARY SCHOOL COMPLETION RATES ARE **RIISING**, BUT THE PACE IS SLOW AND UNEVEN

COMPLETION RATES



LOW- AND LOWER-MIDDLE-INCOME COUNTRIES FACE A NEARLY

\$100 BILLION

ANNUAL FINANCING GAP

TO REACH THEIR EDUCATION TARGETS



Mr. Ashok Kumar Rathour

Adhyaksh

Janbhagidari Samiti Govt. College Jaithari, Anuppur (M.P.)

Forward



Dear Esteemed Members of Government College Jaithari,

As the Adhyaksh of the Janbhagidari Samiti of Government College Jaithari, District Anuppur, Madhya Pradesh, it gives me immense pleasure to present this foreword to our comprehensive College Policy. Since our institution's establishment in 2012, we have been on a journey of growth, learning, and community engagement. This policy document marks another significant milestone in our college's development.

The Janbhagidari Samiti, or Public Participation Committee, plays a crucial role in bridging the gap between the college and the community. Our committee's vision aligns perfectly with the college's mission to provide quality education while fostering a sense of social responsibility among our students.

This College Policy is a testament to our collective efforts to create an institution that not only excels in academics but also prepares students to be responsible citizens. It encompasses various aspects of college life, from academic standards to community outreach programs, reflecting our commitment to holistic education.

I urge all stakeholders - students, faculty, staff, and community members - to embrace this policy wholeheartedly. It is through your active participation and adherence to these guidelines that we can truly realize the potential of our institution.

As we move forward, let us remember that the strength of our college lies in the spirit of 'Janbhagidari' - public participation. This policy is not just a document, but a shared vision for our college's future. Together, we can build an educational institution that serves as a beacon of knowledge and social progress in our region.

I look forward to your continued support and cooperation in implementing this policy and in furthering the growth of Government College Jaithari.

Sincerely,

**Mr. Ashok Kumar Rathour
Adhyaksh- Janbhagidari Samiti
Govt. College Jaithari
District Anuppur, (M.P.)**



Dr. Ramesh Singh Wate

Principal

Govt. College Jaithari, Anuppur (M.P.)

Forward



Dear Students, Faculty, and Staff,

As the Principal of Government College Jaithari, District Anuppur, Madhya Pradesh, it is my privilege to present our comprehensive College Policy. This document serves as a cornerstone for our institution, outlining our vision, mission, and the guiding principles that shape our academic environment.

Our college policy is designed to foster an atmosphere of academic excellence, personal growth, and social responsibility. It reflects our commitment to providing quality education while nurturing the diverse talents of our students. The policy encompasses various aspects of college life, including academic standards, code of conduct, extracurricular activities, and community engagement.

I encourage all members of our college community to familiarize themselves with this policy. It is not merely a set of rules, but a roadmap for our collective success. By adhering to these guidelines, we create a harmonious and productive learning environment that benefits everyone.

As we move forward, let us embrace these policies with enthusiasm and dedication. Together, we can build a college that not only imparts knowledge but also shapes responsible citizens who will contribute positively to society.

I look forward to working with all of you in upholding the high standards set forth in this policy and in continually striving for excellence in all our endeavors.

Sincerely,

Dr. Ramesh Singh Wate
Principal
Govt. College Jaithari
District-Anuppur (M.P.)

Govt. College Jaithari, Anuppur M.P.

Department of Higher Education M.P.

Student Admission SMS Policy

1. Purpose: The purpose of the Student Admission SMS Policy at Govt. College Jaithari is to establish guidelines for the responsible and effective use of Short Message Service (SMS) communication during the student admission process. This policy aims to provide clear communication to prospective students while respecting their privacy.

2. Scope: This policy applies to all college admissions staff and relevant personnel involved in sending SMS messages to prospective students.

3. Consent and Opt-In:

- Admission staff must obtain explicit consent from prospective students before sending admission-related SMS messages.
- Clearly communicate the purpose of the SMS and the type of information that will be shared.

4. Information Sharing:

- Limit SMS messages to essential and time-sensitive admission-related information, such as application status updates, deadlines, and event invitations.
- Avoid sending marketing or promotional messages via SMS without explicit consent.

5. Frequency and Timing:

- Limit the frequency of admission-related SMS messages to avoid unnecessary communication.
- Send SMS messages during appropriate hours, taking into account time zone differences.

6. Data Security:

- Ensure the security and confidentiality of student information shared via SMS.
- Do not include sensitive information, such as Social Security numbers or financial details, in SMS messages.

7. Opt-Out Mechanism:

- Provide a clear and simple mechanism for students to opt out of receiving admission-related SMS messages.
- Honor opt-out requests promptly and efficiently.

8. Message Clarity:

- Keep admission-related SMS messages concise, clear, and focused on the necessary information.
- Include contact information for admissions support in case students have questions or concerns.

9. Coordination with Other Channels:

- Coordinate SMS communication with other admission channels, such as email or online portals, to ensure consistency and avoid redundancy.

10. Training and Guidelines:

- Provide training to admissions staff on the proper use of SMS communication and compliance with this policy.
- Maintain written guidelines for staff to reference when sending admission-related SMS messages.

11. Review and Revision: This Student Admission SMS Policy will be reviewed annually to ensure its relevance and effectiveness. Any necessary revisions will be made in consultation with relevant stakeholders.

12. E-Granthalay SMS Service.

Prepared By:- Dr. Khushboo Khan

Verified By :- Dr. Jeetendra Singh Dhurve

**Coordinator IQAC
Govt. College Jaithari**

**Principal
Govt. College Jaithari
Anuppur (M.P.) 484330**